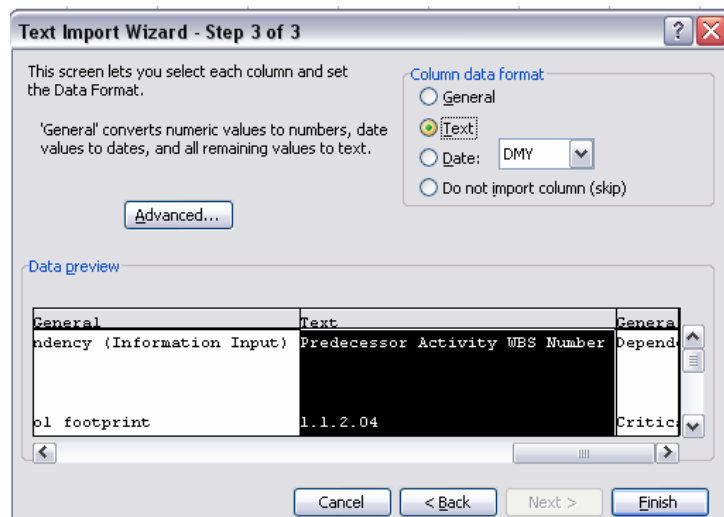


Ensuring a table in text file format can be imported into ADePT Design Builder

If experiencing problems importing a table into ADePT Design Builder this could be the result of having headings or activities which contain WBS numbers such as 1.10, 1.20 or 2.10, which MS Excel will automatically convert to 1.1, 1.2 and 2.1 if it thinks they are regular numbers.

To overcome this problem:

1. Open the text file (with extension .txt) containing your table in MS Excel, using Open from the File menu and changing the file type.
2. In MS Excel's Text Import Wizard, select Next until you get to step 3.
3. At step 3, select the columns in the table containing the activity WBS and the predecessor WBS and change the column data format from General to Text.



4. If this is the first time the file has been opened following an export from ADePT Design Builder then numbers such as 1.10 will be preserved. If, however, you have previously worked on the table in Excel then these numbers may have been changed. Check the format of numbers such as 1.10, 1.20 etc. and change them if needed - they will be preserved from this point onwards.
5. Save the file (still in text format).